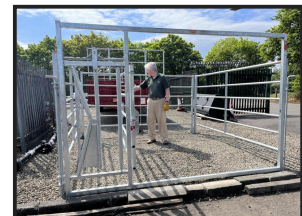
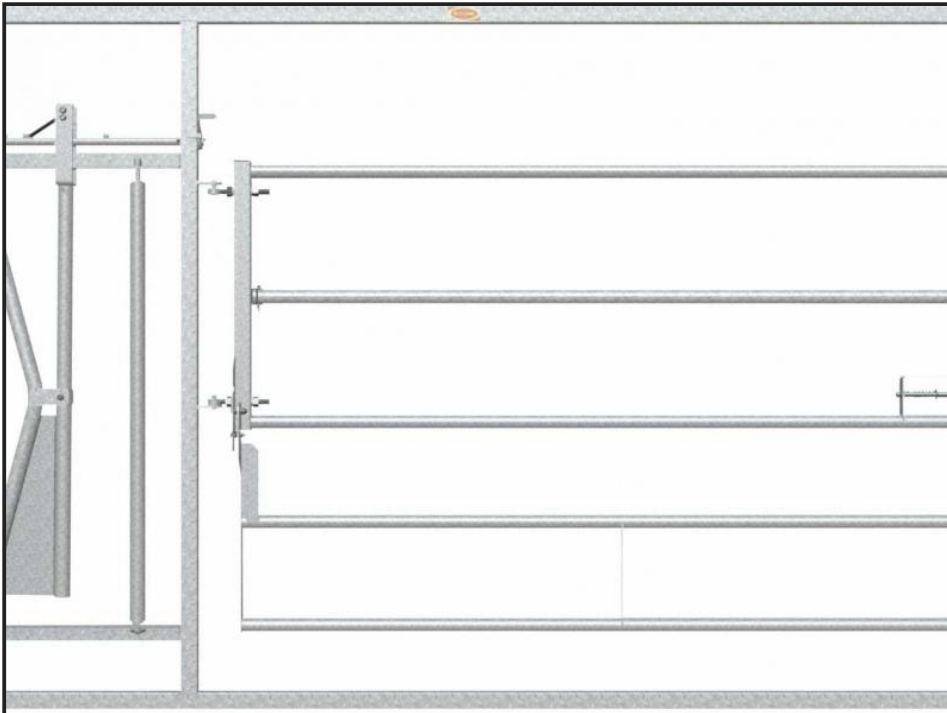




# Ritchie Calving Gate



## £POA

Dimensions 3064 x 1955 mm. This Ritchie Calving Gate features a number of unique benefits to help stock farmers improve stock handling safety. Self-locking head-yoke. Easily assembled into position using joining pins. Hinge round gate, lockable by chain offering good udder access for suckling calves. Unique fold-up lower section. Hot dipped galvanised finish. For more information Contact your Local Depot: BEITH - 01505 500011, AYR - 01292 285921, STRANRAER - 01776 707030.

### Product Details

Product Details	
<b>Category/Type</b>	<b>Miscellaneous</b>
<b>Make</b>	<b>Ritchie</b>
<b>Model</b>	<b>Calving Gate</b>
<b>Year</b>	<b>NEW</b>
<b>Hours</b>	-

#### Beith Depot

Willowyard Industrial Estate, 1  
Willowburn Road, KA15 1LP, Beith  
+44 (0)1505 500011  
sales@jsmontgomery.co.uk

#### Stranraer Depot

Commerce Road, Black Park Industrial  
Estate, DG9 7DF, Stranraer  
+44 (0)1776 707030  
stranraer@jsmontgomery.co.uk

#### Ayr Depot

Whitefordhill Livestock Market,  
Unit 2, KA6 5JW Ayr  
+44 (0)1292 285921  
ayr@jsmontgomery.co.uk